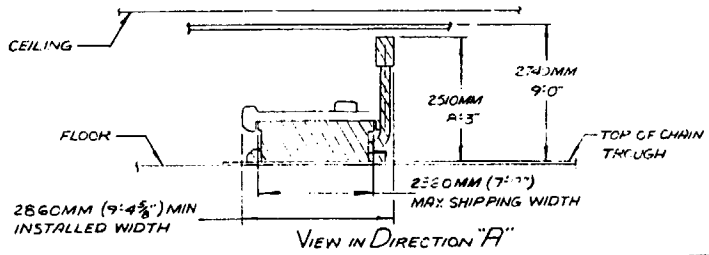
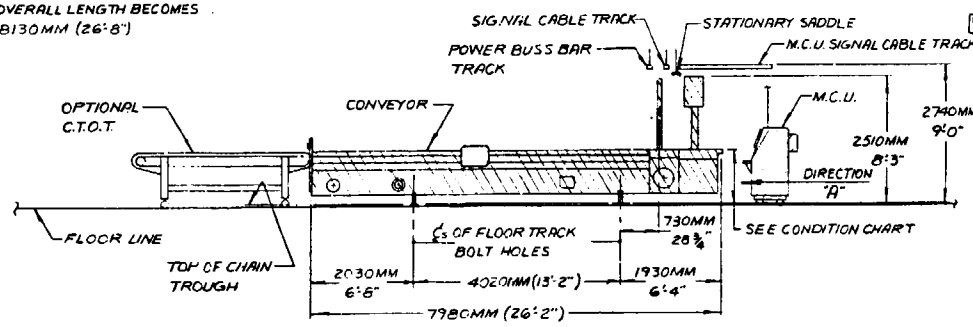


NOTE: IF OPTIONAL C.T.O.T IS USED OVERALL LENGTH BECOMES 8130MM (26'8")



CONDITION	RAMP HEIGHT FROM FLOOR LINE
TRACKS IN THE FLOOR	902MM (35 1/2")
TRACKS ON THE FLOOR	952MM (37 1/2")

REV	DESCRIPTION	BY	DATE
E	ECN 40495 - REDRAWN/UPDATE
F	GRN 42700: TEST WAS 3 PHASE/ISOLATED NEUTRAL
G	GRN 42700: SHIP WIDTH 7'9"
H	GRN 44978: C-100 CONTROL REQ. WIG (5 INCH) 4.155, WIS 3 PHASE NEUTRAL 200V 50HZ 30 AMP 200V 50HZ 240V 50HZ

CUSTOMER MUST SELECT AND SUPPLY ONE OF THE FOLLOWING AVAILABLE VOLTAGE CONFIGURATIONS AND UTILITIES

TABLE POWER REQUIREMENTS: 4 WIRE 3 PHASE 60 H.P. VACUUM MOTOR 70 KVA 50/60 HZ

SELECT	60HZ	SELECT	50HZ
A	440	D	440
B	460/480	E	380/400/415
C	550/575		

C-100 CONTROL REQUIREMENTS

A	4 WIRE 3 PHASE 8KVA 50/60 HZ 200MIN-240MAX
B	5 WIRE 3 PHASE 8KVA 50HZ 380V 3 PHASE, NEUTRAL GND

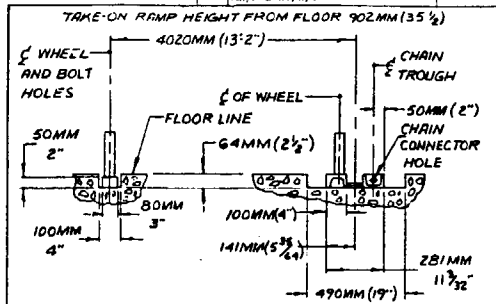
COMPRESSED AIR REQUIREMENTS:
CLEAN AIR SUPPLY REQUIRED 0.0015% (33CFM) 700KPA (100PSIG) MIN OIL AND WATER FREE FROM CUSTOMER'S AIR SUPPLY TO AIR REGULATOR ASSY

TABLE WEIGHT ~ 5,200 KG (12,000 LBS)
CONTROL WEIGHT ~ 270 KG (600 LBS)

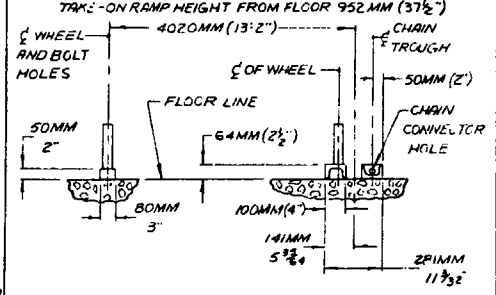
GENERAL NOTES:
1) S-91 CHECK OFF INSTALLATION DWG E-53874
2) FLOOR UNDER TRACKS FOR ENTIRE LENGTH OF AREA SWEEP BY CONVEYOR MUST BE FULLY GROUTED (NO GAPS) AND MUST BE FLAT WITHIN 3MM (1/8") FOR ENTIRE LENGTH OF TRAVEL
3) FOR SYSTEM W/AIR COOLANT KIT SEE C-44455.

S-91 SYSTEM SPECIFICATIONS

CUTTING CAPABILITIES:
FABRIC STACK HEIGHT - 80MM (3") MAX COMPRESSED
CUTTING AREA - 1830MM x 4670MM (6'0" x 15'4")
CUTTING HEAD TRAVERSE SPEED ~ 20 IPS MAX



VIEW OF WHEEL TRACKS ~ SHOWN IN THE FLOOR INSTALLED BY THE CUSTOMER



VIEW OF WHEEL TRACKS ~ SHOWN ON THE FLOOR INSTALLED BY THE CUSTOMER

UNLESS OTHERWISE SPECIFIED
DECIMAL TOL. ± .001 FRACTIONAL TOL. ANGLES ± .001 FINISH: PALLETS BREAK ALL SHARP EDGES MAX SCALE: NONE

DO NOT SCALE DWT

SEE ON

GENEER CORPORATION TECHNOLOGY INC
A DIVISION OF GENEER SCIENTIFIC INC

FILE: TRAVELING CONVEYOR
S-91 SPECS STANDARD

DATE: 2-10-86

BY: MORTENSEN, R.
DWG NO: D-44047

SCALE: NONE

REV: 1

SHEET 1 OF 1

PROPRIETARY MATERIAL
THIS DRAWING IS THE PROPERTY OF GGT
GENEER CORPORATION TECHNOLOGY INC
AND IS NOT TO BE REPRODUCED OR USED TO FURNISH ANY INFORMATION FOR INVENTION, OR OTHERWISE FOR ANY PURPOSE, WITHOUT THE WRITTEN PERMISSION PROVIDED FOR BY GGT. CONTACT GGT FOR MORE INFORMATION.

PART MARKING METHOD
PIN
1. CAST PART NUMBER
2. METAL STAMP PART NUMBER
3. ENGRAVED PART NUMBER
4. ELECTROETCH PART NUMBER & NEUTRALIZE
5. MARK PART NUMBER WITH PREPARED INK
6. SAND & TAG WITH PART NUMBER
7. MARK PART NUMBER ON REMOVABLE LABEL
8. MARK PART NUMBER
9. SEE NOTE